



Dal 1817 - 200 anni di storia per guardare al futuro.

Una storia affascinante che inizia nel 1817 quando Alessandro Rossi fonda l'azienda a Schio, in provincia di Vicenza (non lontano da Venezia).

Lanerossi diventa presto uno dei punti di riferimento della migliore tradizione tessile italiana. La grande perizia nella scelta delle materie prime naturali (come lane Merinos e Cashmere) e l'esperienza nel saperle lavorare con cura artigianale sono ancora oggi i tratti distintivi che rendono unico il prestigio di questo marchio.

Lanerossi dal 1987 è entrata nel gruppo Marzotto, una delle più importanti realtà tessili a livello mondiale.

Since 1817 - 200 years of history and a look to the future.

A fascinating history that began in 1817 when Alessandro Rossi founded the company in Schio, in the province of Vicenza (not far from Venice). Lanerossi soon became a benchmark for the finest tradition in Italian textiles. Expertise in sourcing the best natural raw materials (such as Merinos wool and Cashmere) and experience in knowing how to process it with artisanal skill remain the distinctive features that make this one of the most prestigious, unique brands worldwide. In 1987 Lanerossi joined the Marzotto group, a leader in the world textile industry.

Seit 1817 - Eine 200-jährige Geschichte mit Blick in die Zukunft.

Eine faszinierende Geschichte beginnt 1817, als Alessandro Rossi sein Unternehmen in Schio, Provinz Vicenza (nicht weit von Venedig) gründet. Schon bald wird Lanerossi zu einem der Bezugspunkte bester italienischer Textiltradition. Die große Fachkenntnis in der Auswahl der ausgesuchtesten natürlichen Rohmaterialien (wie Merinos-Wolle und Cashmere) und die ausgereifte Erfahrung in ihrer mit handwerklicher Sorgfalt durchgeführten Bearbeitung sind noch heute die prägenden Eigenschaften, die das Prestige dieses Markenzeichens einzigartig werden lassen. Lanerossi gehört seit 1987 zur Firmengruppe Marzotto, einer der bedeutendsten Realitäten der Textilindustrie auf Weltniveau.

Depuis 1817 - 200 ans d'histoire pour regarder le futur.

Une histoire fascinante qui commence en 1817, quand Alessandro Rossi fonde l'entreprise à Schio, dans la province de Vicence (non loin de Venise). Lanerossi devient tôt la référence du meilleur de la tradition textile italienne. Sa maîtrise dans le choix de matières premières naturelles parmi les plus sélectionnées (comme les laines mérinos et cachemire) et la qualité artisanale de son savoir-faire sont aujourd'hui encore les traits distinctifs qui font l'unicité du prestige de cette marque. Depuis 1987 Lanerossi fait partie du groupe Marzotto, l'une des plus importantes réalités textiles à l'échelle mondiale.

LANERROSSI® COLLECTION

PLAID/THROW	
SIXTY	2
SATURNO DOUBLE FACE	4
SATURNO SPINA	6
MORFEO	8
BALTIMORA	10
CHICAGO	12
NORVEGIA	14
TROPICAL	16
SPINA BLEND	18
COPERTA/BLANKET	
SIXTY	2
GIUNONE	20
MICHELANGELO	22
N.FIORDILOTO	24
AFRODITE	26
TERMOCOPERTA UNITO	28
TERMOCOPERTA DOUBLE FACE	30
TERMOCOPERTA ROMBI	32
SPRING	34
NIGHT & DAY	36
GALLES	38
CHROMA	40
LINKS	42

RED LABEL COLLECTION

PLAID/THROW	
ERA	46
DIONISO	48
CHINÈ DEGRADÈ	50
CREPUSCOLO	52
NOUVEAU TARTAN	54
ROUBANS	56
KIMONO	58
BAMBOO TARTAN	60
OASI	62
LITORALE	64
VERSILIA	66
TEXTURE	68
COPERTA/BLANKET	
LIVING	70

CHRISTMAS COLLECTION

PLAID/THROW	
CANAZEI	73
CORVARA	74
CERVINIA	75



LANEROSSI®

1817-2017

NEW

SIXTY
PLAID/COPERTA
THROW/BLANKET



2006



8006



5006

Composizione:
100% Lana Merinos Superfine
Peso gr / mq: 230
Misura cm: 130 x 180
 210 x 160
 210 x 250
(frange incluse)

Composition:
100% Superfine Merinos wool
Weight gr / sqm: 230
Size in: 51 / 70
 82 / 63
 82 / 98
(fringes included)

Zusammensetzung:
100% Superfein Merinoswolle
Gewicht gr / qm: 230
Grosse cm: 130 x 180
 210 x 160
 210 x 250
(inklusive Fransen)

Composition:
100% Superfine laine Mérinos
Poids gr / m²: 23
Dimension cm: 130 x 180
 210 x 160
 210 x 250
(franges compris)



SATURNO DOUBLE FACE PLAID THROW

NEW

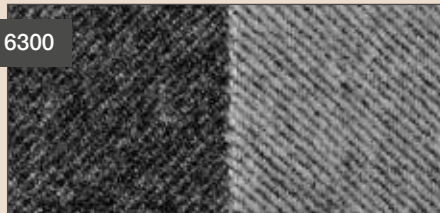
1000



6200



6300



Composizione:
20% Cashmere
80% Lana Merinos Superfine
Peso gr / mq: 250
Misura cm: 130 x 180
(frange incluse)

Composition:
20% Cashmere
80% Superfine Merinos wool
Weight gr / sqm: 250
Size in: 51 / 70
(fringes included)

Zusammensetzung:
20% Kaschmir
80% Superfein Merinoswolle
Gewicht gr / qm: 250
Groesse cm: 130 x 180
(inklusive Fransen)

Composition:
20% Cachemire
80% Superfine laine Mérinos
Poids gr / m²: 250
Dimension cm: 130 x 180
(franges compris)



SATURNO
SPINA
PLAID THROW

NEW



Composizione:
20% Cashmere
80% Lana Merinos Superfine
Peso gr / mq: 250
Misura cm: 130 x 180
(frange incluse)

Composition:
20% Cashmere
80% Superfine Merinos wool
Weight gr / sqm: 250
Size in: 51 / 70
(fringes included)

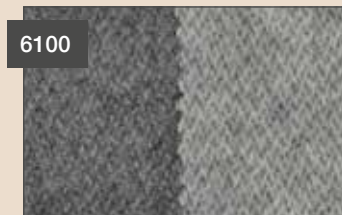
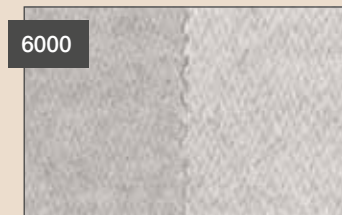
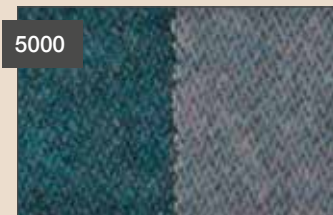
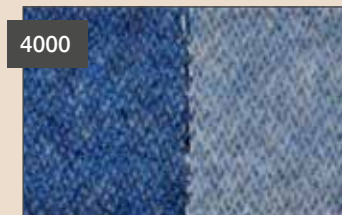
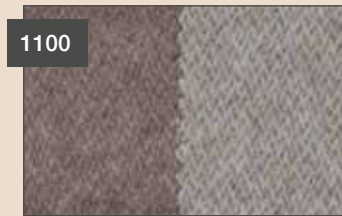
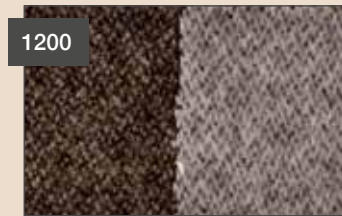
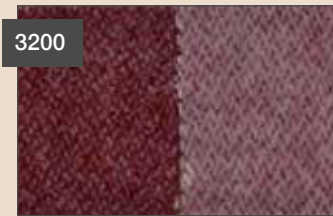
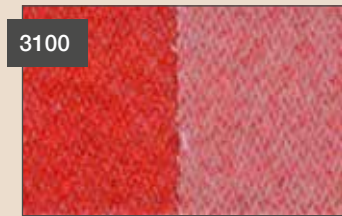
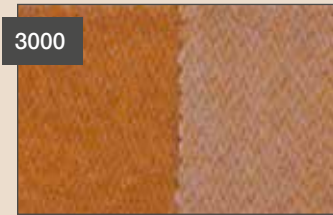
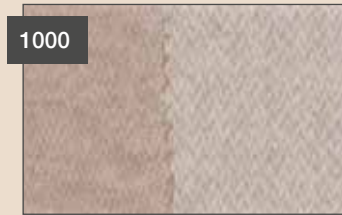
Zusammensetzung:
20% Kaschmir
80% Superfein Merinoswolle
Gewicht gr / qm: 250
Grosesse cm: 130 x 180
(inklusive Fransen)

Composition:
20% Cachemire
80% Superfine laine Mérinos
Poids gr / m²: 250
Dimension cm: 130 x 180
(franges compris)



MORFEO

PLAID THROW



Composizione:
100% Lana Merinos Superfine
Peso gr / mq: 230
Misura cm: 130 x 180
(frange incluse)

Composition:
100% Superfine Merinos wool
Weight gr / sqm: 230
Size in: 51 / 70
(fringes included)

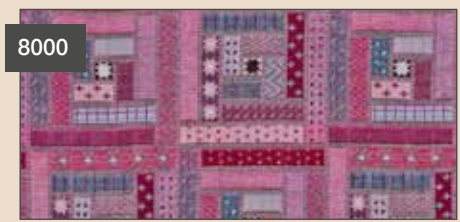
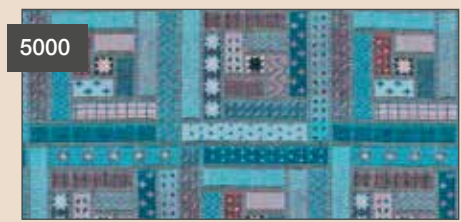
Zusammensetzung:
100% Superfein Merinoswolle
Gewicht gr / qm: 230
Grosse cm: 130 x 180
(inklusive Fransen)

Composition:
100% Superfine laine Mérinos
Poids gr / m²: 230
Dimension cm: 130 x 180
(franges compris)



BALTIMORA

PLAID THROW



Composizione:
100% Lamswool di Merinos
Peso gr / mq: 380
Misura cm: 130 x 190
(frange incluse)

Composition:
100% Merinos Lambswool
Weight gr / sqm: 380
Size in: 51 / 74
(fringes included)

Zusammensetzung:
100% Merinos Lammwolle
Gewicht gr / qm: 380
Grosesse cm: 130 x 190
(inklusive Fransen)

Composition:
100% Laine d'agneau Mérinos
(Lambswool)
Poids gr / m²: 380
Dimension cm: 130 x 190
(franges compris)



CHICAGO

PLAID THROW

4960



7040



9040



Composizione:
100% Lamswool di Merinos
Peso gr / mq: 380
Misura cm: 130 x 190
(frange incluse)

Composition:
100% Merinos Lamswool
Weight gr / sqm: 380
Size in: 51 / 74
(fringes included)

Zusammensetzung:
100% Merinos Lammwolle
Gewicht gr / qm: 380
Grosse cm: 130 x 190
(inklusive Fransen)

Composition:
100% Laine d'agneau Mérinos
(Lamswool)
Poids gr / m²: 380
Dimension cm: 130 x 190
(franges compris)



NORVEGIA

PLAID THROW



1090



Composizione:
100% Lana Vergine
Peso gr / mq: 330
Misura cm: 130 x 170
(frange incluse)

4090



Composition:
100% Virgin Wool
Weight gr / sqm: 330
Size in: 51 / 66
(fringes included)

3000



Zusammensetzung:
100% Schurwolle
Gewicht gr / qm: 330
Grosse cm: 130 x 170
(inklusive Fransen)

5000



Composition:
100% Laine Vierge
Poids gr / m²: 330
Dimension cm: 130 x 170
(franges compris)

TROPICAL

PLAID THROW



1000



1100



1200



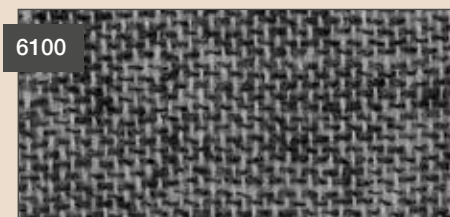
4100



5000



6000



6100



7000

Composizione:
80% Lamswool di Merinos
20% Poliammide
Peso gr / mq: 100
Misura cm: 130 x 180
(frange include)

Composition:
80% Merinos Lamswool
20% Polyammide
Weight gr / sqm: 100
Size in: 51 / 70
(fringes included)

Zusammensetzung:
80% Merinos Lammwolle
20% Polyamid
Gewicht gr / qm: 100
Grosesse cm: 130 x 180
(inklusive Fransen)

Composition:
80% Laine d'agneau Mérinos
(Lamswool)
20% Polyamide
Poids gr / m²: 100
Dimension cm: 130 x 180
(franges compris)



SPINA BLEND

PLAID THROW

&
PILLOW



9090



6090



1090



4090



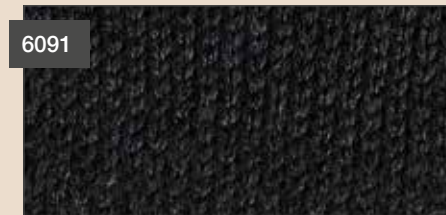
8090



1091



6091



1092



Composizione:
52% Lamswool di Merinos
48% Acrilico
Peso gr / mq: 420
Misura cm: 130 x 160
Cuscino cm: 40 x 40

Composition:
52% Merinos Lamswool
48% Acrylic
Weight gr / sqm: 420
Size in: 51 / 63
Pillow in: 15 / 15

Zusammensetzung:
52% Merinos Lammwolle
48% Acryl
Gewicht gr / qm: 420
Grosse cm: 130 x 160
Kissen cm: 40 x 40

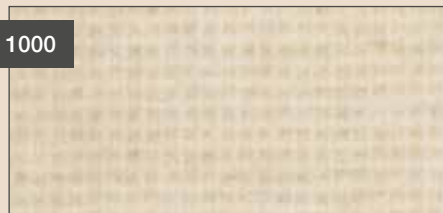
Composition:
52% Laine d'agneau Mérinos
48% Acrylique
Poids gr / m²: 420
Dimension cm: 130 x 160
Coussin cm: 40 x 40



GIUNONE

COPERTA *BLANKET*

1000



6000



Composizione:
90% Cashmere
10% Lambswool
Peso gr / mq: 300
Misura cm: 220 x 160
220 x 250
220 x 270

Composition:
90% Cashmere
10% Lambswool
Weight gr / sqm: 300
Size in: 86 / 63
86 / 98
86 / 106

Zusammensetzung:
90% Kaschmir
10% Lammwolle
Gewicht gr / qm: 300
Grosesse cm: 220 x 160
220 x 250
220 x 270

Composition:
90% Cachemire
10% Laine d'agneau Mérinos
Poids gr / m²: 300
Dimension cm: 220 x 160
220 x 250
220 x 270



MICHELANGELO
COPERTA *BLANKET*



9000



Composizione:
45% Cashmere
15% Lambswool
40% Acrilico
Peso gr / mq: 290
Misura cm: 238 x 203
238 x 228
238 x 260
238 x 280
238 x 304

Lavabile a 30°C

Composition:
45% Cashmere
15% Lambswool
36% Acrylic
Weight gr / sqm: 290
Size in: 94 / 80
94 / 90
94 / 102
94 / 110
94 / 120

Washable at 30°C

Zusammensetzung:
45% Kaschmir
15% Lammwolle
40% Acryl
Gewicht gr / qm: 290
Grosse cm: 238 x 203
238 x 228
238 x 260
238 x 280
238 x 304

Waschbar bei 30°C

Composition:
45% Cachemire
15% Laine d'agneau Mérinos
40% Acrylique
Poids gr / m²: 290
Dimension cm: 238 x 203
238 x 228
238 x 260
238 x 280
238 x 304

Lavable à 30°C



N.FIORDILOTO
COPERTA BLANKET

1000



1100



6000



Composizione:
10% Cashmere
90% Lana Merinos Superfine
Peso gr / mq: 320
Misura cm: 220 x 160
220 x 250
220 x 270

Composition:
10% Cashmere
90% Superfine Merinos Wool
Weight gr / sqm: 320
Size in: 86 / 63
86 / 98
86 / 106

Zusammensetzung:
10% Kaschmir
90% Superfein Merinoswolle
Gewicht gr / qm: 320
Grosesse cm: 220 x 160
220 x 250
220 x 270

Composition:
10% Cachemire
90% Superfine laine
d'agneau Mérinos
Poids gr / m²: 320
Dimension cm: 220 x 160
220 x 250
220 x 270



AFRODITE

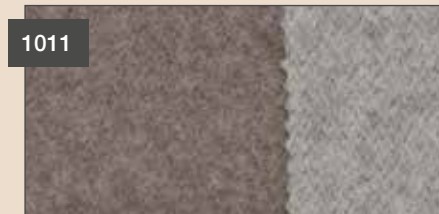
COPERTA *BLANKET*



1015



1011



4000



6010



Composizione:
100% Lana Merinos Superfine
Peso gr / mq: 230
Misura cm: 180 x 240
220 x 240
220 x 250
240 x 260
240 x 300

Composition:
100% Superfine Merinos wool
Weight gr / sqm: 230
Size in: 70 / 94
86 / 94
86 / 98
94 / 102
94 / 118

Zusammensetzung:
100% Superfein Merinoswolle
Gewicht gr / qm: 230
Grosse cm: 180 x 240
220 x 240
220 x 250
240 x 260
240 x 300

Composition:
100% Superfine laine Mérinos
Poids gr / m²: 230
Dimension cm: 180 x 240
220 x 240
220 x 250
240 x 260
240 x 300



TERMOCOPERTA
UNITO
COPERTA *BLANKET*

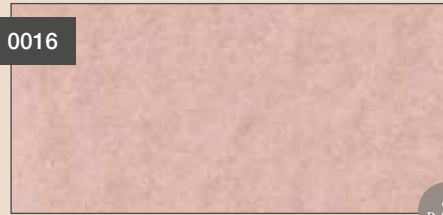
&
BABY

1059



&
BABY

0016



&
BABY

9584



&
BABY

2815

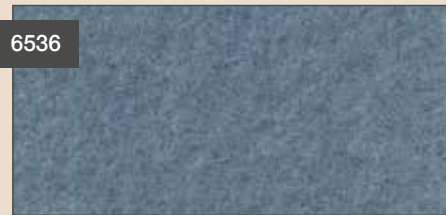


&
BABY

7790



6536



4416



1196



1192



4093



6866



&
BABY

7439



NEW

Composizione:
100% Lamswool di Merinos
Peso gr / mq: 460
Misura cm: 220 x 160
220 x 180
220 x 250

Composition:
100% Merinos Lamswool
Weight gr / sqm: 460
Size in: 86 / 63
86 / 70
86 / 98

Zusammensetzung:
100% Merinos Lammwolle
Gewicht gr / qm: 460
Grosse cm: 220 x 160
220 x 180
220 x 250

Composition:
100% Laine d'agneau Mérinos
(Lamswool)
Poids gr / m²: 460
Dimension cm: 220 x 160
220 x 180
220 x 250



TERMOCOPERTA
DOUBLE FACE
COPERTA *BLANKET*



Composizione:
100% Lamswool di Merinos
Peso gr / mq: 460
Misura cm: 220 x 160
220 x 180
220 x 250
220 x 270



Composition:
100% Merinos Lamswool
Weight gr / sqm: 460
Size in: 86 / 63
86 / 70
86 / 98
86 / 106

Zusammensetzung:
100% Merinos Lammwolle
Gewicht gr / qm: 460
Groesse cm: 220 x 160
220 x 180
220 x 250
220 x 270

Composition:
100% Laine d'agneau Mérimos
(Lamswool)
Poids gr / m²: 460
Dimension cm: 220 x 160
220 x 180
220 x 250
220 x 270



TERMOCOPERTA
ROMBI
COPERTA *BLANKET*

1100



Composizione:
100% Lamswool di Merinos
Peso gr / mq: 460
Misura cm: 220 x 160
220 x 180
220 x 250
220 x 270

6000



Composition:
100% Merinos Lambswool
Weight gr / sqm: 460
Size in: 86 / 63
86 / 70
86 / 98
86 / 106

Zusammensetzung:
100% Merinos Lammwolle
Gewicht gr / qm: 460
Grosesse cm: 220 x 160
220 x 180
220 x 250
220 x 270

Composition:
100% Laine d'agneau Mérinos
(Lambswool)
Poids gr / m²: 460
Dimension cm: 220 x 160
220 x 180
220 x 250
220 x 270



SPRING

COPERTA BLANKET



SPRING

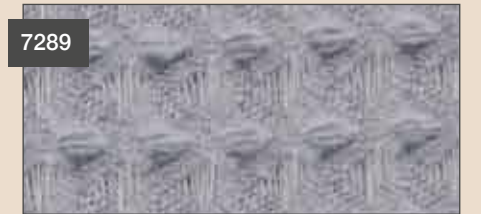
7388



7649



7289



7371



7697



7288



7387



7164



7427



7771



7790



7573



Composizione:
100% Lambswool di Merinos
Peso gr / mq: 300
Misura cm: 220 x 160
220 x 250

Composition:
100% Merinos Lambswool
Weight gr / sqm: 300
Size in: 86 / 63
86 / 98

Zusammensetzung:
100% Merinos Lammwolle
Gewicht gr / qm: 300
Groesse cm: 220 x 160
220 x 250

Composition:
100% Laine d'agneau Mérinos
(Lambswool)
Poids gr / m²: 300
Dimension cm: 220 x 160
220 x 250



NIGHT & DAY

COPERTA BLANKET



1059



1220



7300



1194



1196



1184



7554



7216

Composizione:
100% Lambswool di Merinos
Peso gr / mq: 280
Misura cm: 220 x 160
220 x 250
220 x 270

Composition:
100% Merinos Lambswool
Weight gr / sqm: 280
Size in: 86 / 63
86 / 98
86 / 106

Zusammensetzung:
100% Merinos Lammwolle
Gewicht gr / qm: 280
Groesse cm: 220 x 160
220 x 250
220 x 270

Composition:
100% Laine d'agneau Mérinos
(Lambswool)
Poids gr / m²: 280
Dimension cm: 220 x 160
220 x 250
220 x 270



GALLES

COPERTA *BLANKET*



1000



1200



4000



Composizione:
100% Lana Vergine
Peso gr / mq: 450
Misura cm: 210 x 160
210 x 250
230 x 270

Composition:
100% Virgin Wool
Weight gr / sqm: 450
Size in: 82 / 63
82 / 98
90 / 106

Zusammensetzung:
100% Schurwolle
Gewicht gr / qm: 450
Grosesse cm: 210 x 160
210 x 250
230 x 270

Composition:
100% Laine Vierge
Poids gr / m²: 450
Dimension cm: 210 x 160
210 x 250
230 x 270



CHROMA

COPERTA BLANKET

1059



1220



1194



7880



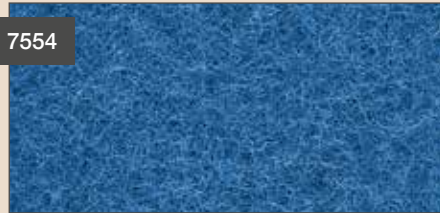
0216



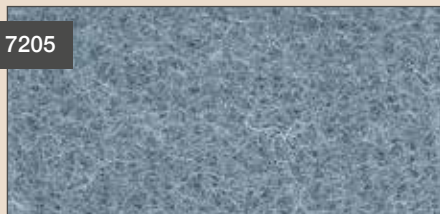
7547



7554



7205



1192



Composizione:
100% Lana Vergine
Peso gr / mq: 450
Misura cm: 210 x 160
210 x 180
210 x 250

Composition:
100% Virgin Wool
Weight gr / sqm: 450
Size in: 82 / 63
82 / 70
82 / 98

Zusammensetzung:
100% Schurwolle
Gewicht gr / qm: 450
Grosesse cm: 210 x 160
210 x 180
210 x 250

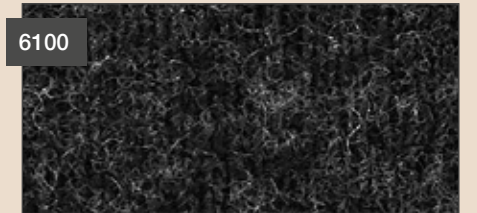
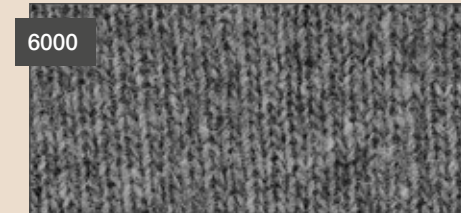
Composition:
100% Laine Vierge
Poids gr / m²: 450
Dimension cm: 210 x 160
210 x 180
210 x 250





NEW

LINKS
COPERTA BLANKET



Composizione:
80% Lana vergine
20% Poliammide
Peso gr / mq: 310
Misura cm: 220 x 250

Composition:
80% Virgin Wool
20% Polyammide
Weight gr / sqm: 310
Size in: 86 / 98

Zusammensetzung:
80% Schurwolle
20% Polyamid
Gewicht gr / qm: 310
Grosesse cm: 220 x 250

Composition:
80% Laine Vierge
20% Polyamide
Poids gr / m²: 310
Dimension cm: 220 x 250





RED LABEL.
COLLECTION

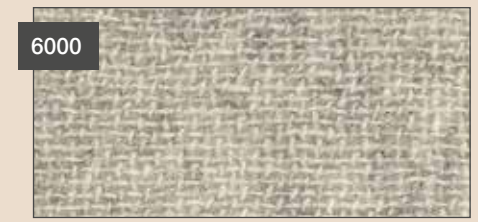


NEW

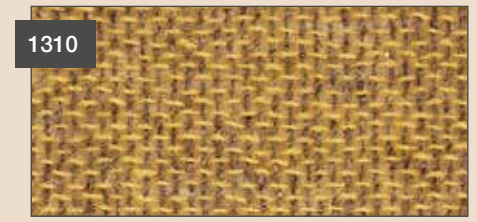
ERA
PLAID THROW



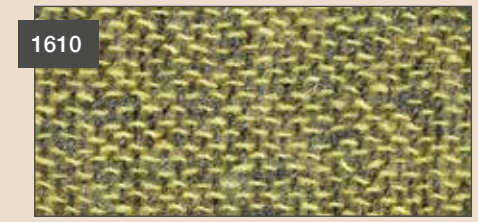
1000



6000



1310



1610



1620



1320



1630



1640

Composizione:
100% Cashmere
Peso gr / mq: 120
Misura cm: 130 x 180
(frange incluse)

Composition:
100% Cashmere
Weight gr / sqm: 120
Size in: 51 / 70
(fringes included)

Zusammensetzung:
100% Kaschmir
Gewicht gr / qm: 120
Groesse cm: 130 x 180
(inklusive Fransen)

Composition:
100% Cachemire
Poids gr / m²: 120
Dimension cm: 130 x 180
(franges compris)

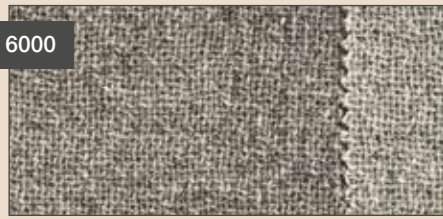


DIONISO

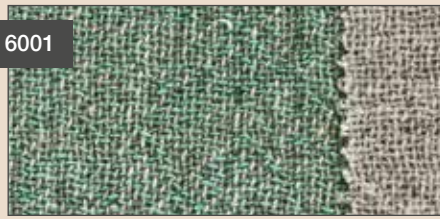
PLAID THROW

NEW

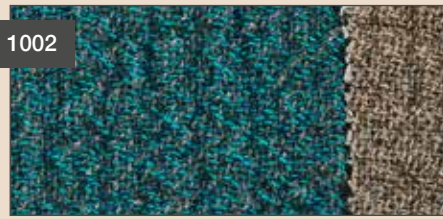
6000



6001



1002



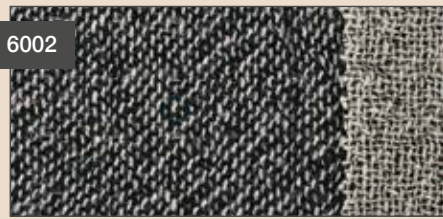
1001



1000



6002



Composizione:
100% Lana Extrafine
Peso gr / mq: 290
Misura cm: 130 x 180
(frange incluse)

Composition:
100% Extrafine wool
Weight gr / sqm: 290
Size in: 51 / 70
(fringes included)

Zusammensetzung:
100% Extrafein wolle
Gewicht gr / qm: 290
Grosesse cm: 130 x 180
(inklusive Fransen)

Composition:
100% Extrafine laine
Poids gr / m²: 290
Dimension cm: 130 x 180
(franges compris)



CHINÈ DÈGRADÈ

PLAID *THROW*



02



03



04

Composizione:
100% Lana Merinos Superfine
Peso gr / mq: 230
Misura cm: 130 x 180

Composition:
100% Superfine Merinos wool
Weight gr / sqm: 230
Size in: 51 / 70

Zusammensetzung:
100% Superfein Merinoswolle
Gewicht gr / qm: 230
Grosse cm: 130 x 180

Composition:
100% Superfine laine Mérinos
Poids gr / m²: 230
Dimension cm: 130 x 180



CREPUSCOLO

PLAID THROW



03



Composizione:
100% Lana Merinos Superfine
Peso gr / mq: 230
Misura cm: 130 x 180

04



Composition:
100% Superfine Merinos wool
Weight gr / sqm: 230
Size in: 51 / 70

Zusammensetzung:
100% Superfein Merinoswolle
Gewicht gr / qm: 230
Grosse cm: 130 x 180

Composition:
100% Superfine laine Mérinos
Poids gr / m²: 230
Dimension cm: 130 x 180

NOUVEAU TARTAN

PLAID *THROW*



04



05



02



03

Composizione:
100% Lana Merinos Superfine
Peso gr / mq: 230
Misura cm: 130 x 180

Composition:
100% Superfine Merinos wool
Weight gr / sqm: 230
Size in: 51 / 70

Zusammensetzung:
100% Superfein Merinoswolle
Gewicht gr / qm: 230
Grosse cm: 130 x 180

Composition:
100% Superfine laine Mérinos
Poids gr / m²: 230
Dimension cm: 130 x 180



ROUBANS

PLAID THROW



ROUBANS

56



02
Composizione:
100% Lana Merinos Superfine
Peso gr / mq: 230
Misura cm: 130 x 180



03
Composition:
100% Superfine Merinos wool
Weight gr / sqm: 230
Size in: 51 / 70

Zusammensetzung:
100% Superfein Merinoswolle
Gewicht gr / qm: 230
Grosesse cm: 130 x 180

Composition:
100% Superfine laine Mérinos
Poids gr / m²: 230
Dimension cm: 130 x 180



57



KIMONO

PLAID THROW

&
PILLOW

01



04



Composizione:
100% Lino
Peso gr / mq: 240
Misura cm: 130 x 180
Cuscino cm: 40 x 40
40 x 60
60 x 60

Composition:
100% Linen
Weight gr / sqm: 240
Size in: 51 / 70
Pillow in: 15 / 15
15 / 23
23 / 23

Zusammensetzung:
100% Flachs
Gewicht gr / qm: 240
Grosse cm: 130 x 180
Kissen cm: 40 x 40
40 x 60
60 x 60

Composition:
100% Lin
Poids gr / m²: 240
Dimension cm: 130 x 180
Coussin cm: 40 x 40
40 x 60
60 x 60



BAMBOO TARTAN

PLAID *THROW*



BAMBOO TARTAN

60

01



Composizione:
100% Lino
Peso gr / mq: 240
Misura cm: 130 x 180

03



Composition:
100% Linen
Weight gr / sqm: 240
Size in: 51 / 70

Zusammensetzung:
100% Flachs
Gewicht gr / qm: 240
Grösse cm: 130 x 180

Composition:
100% Lin
Poids gr / m²: 240
Dimension cm: 130 x 180

61



OASI
PLAID THROW

NEW

2001



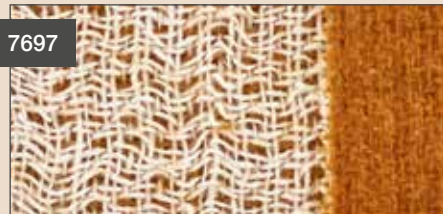
7371



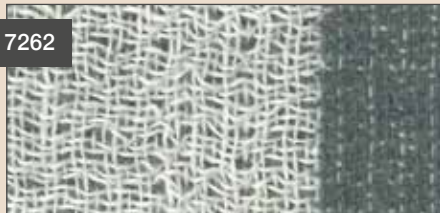
7642



7697



7262



7184



Composizione:
60% Lino
40% Lamswool di Merinos
Peso gr / mq: 290
Misura cm: 130 x 200
(frange incluse)

Composition:
60% Linen
40% Merinos Lambswool
Weight gr / sqm: 290
Size in: 51 / 78
(fringes included)

Zusammensetzung:
60% Flachs
40% Merinos Lammwolle
Gewicht gr / qm: 290
Grosse cm: 130 x 200
(inklusive Fransen)

Composition:
60% Lin
40% Laine d'agneau Mérinos
(Lambswool)
Poids gr / m²: 290
Dimension cm: 130 x 200
(franges compris)



LITORALE

PLAID THROW



1000



4000



5000



6000



7000



Composizione:
52% Lamswool di Merinos
48% Cotone
Peso gr / mq: 320
Misura cm: 130 x 180
(frange include)

Composition:
52% Merinos Lamswool
48% Cotton
Weight gr / sqm: 320
Size in: 51 / 70
(fringes included)

Zusammensetzung:
52% Merinos Lammwolle
48% Baumwolle
Gewicht gr / qm: 320
Groesse cm: 130 x 180
(inklusive Fransen)

Composition:
52% Laine d'agneau Mérinos
(Lamswool) - 48% Coton
Poids gr / m²: 320
Dimension cm: 130 x 180
(franges compris)

VERSILIA

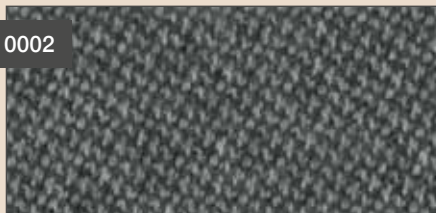
PLAID THROW

NEW

0001



0002



0004



0003



0005



Composizione:
52% Lana Merinos Superfine
48% Acrilico
Peso gr / mq: 220
Misura cm: 130 x 180
(frange incluse)

Composition:
52% Superfine Merinos wool
48% Acrylic
Weight gr / sqm: 220
Size in: 51 / 70
(fringes included)

Zusammensetzung:
52% Superfein Merinoswolle
48% Acryl
Gewicht gr / qm: 220
Groesse cm: 130 x 180
(inklusive Fransen)

Composition:
52% Superfine laine Mérinos
48% Acrylique
Poids gr / m²: 220
Dimension cm: 130 x 180
(franges compris)



TEXTURE

PLAID THROW



1200



2000



4000



5200



Composizione:
32% Lana - 36% Acrilico
23% Cotone - 9% Poliestere
Peso gr / mq: 380
Misura cm: 130 x 180
(frange incluse)

Composition:
32% Wool - 36% Acrylic
23% Cotton - 9% Polyester
Weight gr / sqm: 380
Size in: 51 / 70
(fringes included)

Zusammensetzung:
32% Schurwolle - 36% Acryl
23% Baumwolle - 9% Polyester
Gewicht gr / qm: 380
Grosesse cm: 130 x 180
(inklusive Fransen)

Composition:
32% Laine - 36% Acrylique
23% Coton - 9% Polyester
Poids gr / m²: 380
Dimension cm: 130 x 180
(franges compris)

LIVING

COPERTA *BLANKET*

NEW

6000



1000



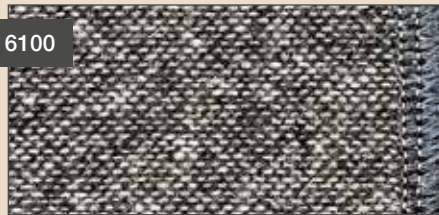
1200



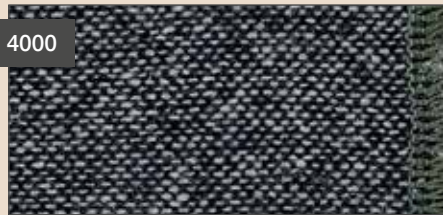
4100



6100



4000



Composizione:
80% Lamswool di Merinos
20% Poliammide
Peso gr / mq: 150
Misura cm: 210 x 160
210 x 250

Composition:
80% Merinos Lamswool
20% Polyammide
Weight gr / sqm: 150
Size in: 82 / 63
82 / 98

Zusammensetzung:
80% Merinos Lammwolle
20% Polyamid
Gewicht gr / qm: 150
Groesse cm: 210 x 160
210 x 250

Composition:
80% Laine d'agneau Mérinos
(Lamswool)
20% Polyamide
Poids gr / m²: 150
Dimension cm: 210 x 160
210 x 250





CHRISTMAS
COLLECTION

Composizione:
100% Lana Merinos Superfine
Peso gr / mq: 240
Misura cm: 130 x 180
(frange incluse)
Cuscino cm: 40 x 40

Composition:
100% Superfine Merinos wool
Weight gr / sqm: 240
Size in: 51 / 70
(fringes included)
Pillow in: 15 / 15

Zusammensetzung:
100% Superfein Merinoswolle
Gewicht gr / qm: 240
Grösse cm: 130 x 180
(inklusive Fransen)
Kissen cm: 40 x 40

Composition:
100% Superfine laine Mérinos
Poids gr / m²: 240
Dimension cm: 130 x 180
(franges compris)
Coussin cm: 40 x 40



CANAZEI
PLAID THROW+
&
PILLOW

CORVARA
PLAID THROW+
&
PILLOW



CERVINIA
PLAID THROW+
&
PILLOW



Composizione:
100% Lana Merinos Superfine
Peso gr / mq: 240
Misura cm: 130 x 180
(frange incluse)
Cuscino cm: 40 x 40

Composition:
100% Superfine Merinos wool
Weight gr / sqm: 240
Size in: 51 / 70
(fringes included)
Pillow in: 15 / 15

Zusammensetzung:
100% Superfein Merinoswolle
Gewicht gr / qm: 240
Groesse cm: 130 x 180
(inklusive Fransen)
Kissen cm: 40 x 40

Composition:
100% Superfine laine Mérinos
Poids gr / m²: 240
Dimension cm: 130 x 180
(franges compris)
Coussin cm: 40 x 40

Composizione:
100% Lana Vergine
Peso gr / mq: 430
Misura cm: 130 x 180
Cuscino cm: 40 x 40

Composition:
100% Virgin Wool
Weight gr / sqm: 430
Size in: 51 / 70
Pillow in: 15 / 15

Zusammensetzung:
100% Schurwolle
Gewicht gr / qm: 430
Groesse cm: 130 x 180
Kissen cm: 40 x 40


Composition:
100% Laine Vierge
Poids gr / m²: 430
Dimension cm: 130 x 180
Coussin cm: 40 x 40



MARZOTTO LAB S.R.L. – Home Textile

Via A. Rossi, 50 - 36013 Piovene Rocchette (VI) Italy
EXPORT +39 0445 693625 - ITALIA 0445 693521 - Fax +39 0445 693527
www.marzottogroup.it - info@marzottohome.it



Follow us on  Lanerossi & Marzotto Home